

TOWARDS A GENERAL MODEL OF TEMPORAL DISCOUNTING

WOUTER VAN DEN BOS AND SAMUEL M. McCLURE

STANFORD UNIVERSITY

Psychological models of temporal discounting have now successfully displaced classical economic theory due to the simple fact that many common behavior patterns, such as impulsivity, were unexplainable with classic models. However, the now dominant hyperbolic model of discounting is itself becoming increasingly strained. Numerous factors have arisen that alter discount rates with no means to incorporate the different influences into standard hyperbolic models. Furthermore, disparate literatures are emerging that propose theoretical constructs that are seemingly independent of hyperbolic discounting. We argue that, although hyperbolic discounting provides an eminently useful quantitative measure of discounting, it fails as a descriptive psychological model of the cognitive processes that produce intertemporal preferences. Instead, we propose that recent contributions from cognitive neuroscience indicate a path for developing a general model of time discounting. New data suggest a means by which neuroscience-based theory may both integrate the diverse empirical data on time preferences and merge seemingly disparate theoretical models that impinge on time preferences.

Key words: hyperbolic discounting, multiple selves, cognitive neuroscience

A tremendous variety of decisions faced by humans and animals require selecting between actions whose outcomes are realized at different times in the future. Moreover, it is quite commonly the case that more desirable outcomes can only be had at the expense of greater time or effort. As such, doing well in many behavioral contexts requires the ability to forego immediate temptations and to delay gratification.

Given the ubiquity and importance of delaying gratification, there has been a longstanding interest in understanding and describing how humans and other animals respond to such decisions. The standard approach to investigating these phenomena is to present intertemporal choices—decisions, for example, between an immediate and a delayed reward—and to describe mathematically how choices are made. Both humans and other animals often prefer the immediate reward even when the delayed reward is larger. Mathematically, this can be summarized by asserting that the subjective value of a reward is discounted by an amount that depends on the delay until receipt (Ainslie,

1975; Rubinstein, 2003; Samuelson, 1937). From a research standpoint, the critical question is the nature of this delay discounting function. Fundamentally, this question can be satisfied by establishing a mathematical formulation of discounting that accounts for the diversity of behaviors involving choices over delays. Identifying such an equation seems likely to benefit from a close coupling between the mathematical function and the psychological and cognitive processes that underlie decision-making.

Advances in understanding the delay discounting equation have been tremendous. In the next section we review these efforts that ultimately culminate in quasi-hyperbolic discounting models that capture behavior with impressive precision (published r^2 values commonly greater than 0.9). However, hyperbolic models are clearly limited in the range of discounting phenomena that they account for. In particular, the models capture behavior well in isolated contexts but are unequipped to account for how discounting varies across situations. These contextual effects can be profound. We believe this limitation arises from the fact that hyperbolic discounting models are distant from the basic cognitive processes that underlie decision-making. We review some highly cited models of discounting. However, our primary focus is on neuroscience, with the goal of proposing a brain-inspired model of discounting that (a) preserves the overall structure of hyperbolic discounting, but (b) is

This work was supported by NIDA grant R03 032580 (SMM) and a Netherlands Organization for Scientific Research (NWO) Rubicon postdoctoral fellowship (WVDB).

Correspondence concerning this article should be addressed to Samuel M. McClure, Department of Psychology, Stanford University, 450 Serra Mall, Stanford, California 94305 (e-mail: smcclure@stanford.edu).

doi: 10.1002/jeab.6

linked to neuroscience findings in such a way as to easily incorporate many contextual effects on discounting, and (c) links to psychological and process models of discounting. In the end, we argue that neuroscience may provide a framework for a next generation of delay discounting models that account for behavior across a broader spectrum of situations than has been possible with hyperbolic discounting models alone.

A History of Delay Discounting in Mathematical Models

A central assumption in decision science is that when selecting between alternatives, choices are predominantly made for the option with the largest subjective value. In the context of delay discounting, outcomes in their most reduced form are composed of reward (or punishments) of a certain magnitude (amount, A) available after some delay (τ) relative to the present time (t). The subjective value of outcomes is then given by the discounting applied on the basis of delay (τ) multiplied by the reward magnitude ($A_{t+\tau}$, for reward available at time $t + \tau$):

$$V_t = A_{t+\tau}D_\tau. \quad (1)$$

D_τ is an individual-specific discount function and can depend on a number of external and internal state variables (which we collectively call *state* or *contextual* factors). Of course, the discounting factor D is generally less than one in value ($0 \leq D_\tau \leq 1$ for all τ), otherwise preferences would be to delay receipt of reward (but see Loewenstein & Prelec, 1993; Radu, Yi, Bickel, Gross, & McClure, 2011).

Describing preferences in intertemporal choices reduces to understanding the character of D_τ . The classical approach to modeling D_τ begins from a normative stance and asks how we ought to behave. For example, we would all like to be consistent in our preferences. If we would prefer to abstain from drug or alcohol use for the sake of long-term wellness, then this preference should always be true, even when substances are readily available and highly tempting. The only discount function that ensures consistent preferences is the standard in economic theory

(Samuelson, 1937), in which the discount factor D_τ is assumed to consist of a single exponential function:

$$D_\tau = \delta^\tau \quad (2)$$

Smaller values for parameter δ indicate greater impatience, whereas larger values for δ capture behavior of more patient individuals, with the limit case being $\delta = 1$ for which the future is not discounted at all.

Although the exponential discounting model was initially not meant to provide a descriptive account of behavior or the mechanisms underlying decision-making, it was quickly adapted as such (Frederick, Loewenstein, & O'Donoghue, 2002). However, in time it became clear that both humans (Kirby, 1997; Thaler, 1981) and other animals (Ainslie & Herrnstein, 1981; Green, Fisher, Perlow, & Sherman, 1981) discount rewards in a non-exponential manner. First of all, empirical studies indicated that discount rates are not constant over time, but appear to decline. For instance, Thaler (1981) showed that people are indifferent to receiving \$15 today and \$20 in one month, \$50 in one year or \$100 in 10 years. This is consistent with annual discount rates of 345% over the one-month period, 120% over the one-year period and only 19% over the ten-year period. Secondly, the exponential discounting model does not predict the all-too-common "dynamic inconsistencies," or preference reversals that are evident in daily behavior (Ainslie, 1975). In simplified laboratory form, people may prefer \$101 in one year and one day over \$100 in one year, but a year later they will often prefer \$100 today over \$101 tomorrow. Holding both such preferences implies preferring one outcome (\$101) only to change preference later on when the more proximate outcome (\$100) approaches "today." This pattern of behavior is especially problematic in self-control situations such as addiction, in which preferences to abstain from drug use are difficult to maintain when drugs are immediately at hand.

To accommodate these and other patterns of behavior, a hyperbolic discounting model has emerged as the dominant model of behavior. This function is most commonly written as

$$D_\tau = 1/(1 + k\tau). \quad (3)$$

The individually determined k is known as the discount factor. Larger values for k reflect greater relative impatience. The finding that temporal discounting is better described by a hyperbola than by an exponential has been replicated in innumerable studies (Frederick et al., 2002; Green & Myerson, 2004).

It is difficult to adequately emphasize the success or importance of the hyperbolic model of discounting. In most experiments it provides a superb fit to individually expressed preferences. Moreover, the hyperbolic model captures behavior in an extremely useful manner. There is only one free parameter, k , that can be easily and appropriately understood as a measure of impulsivity. Greater k implies greater impulsivity and a reduced tolerance for delay.

The hyperbolic function in Equation 3 has one small blemish: It tends to over-estimate subjective value at shorter delays and under-predict values at longer delays. To accommodate this, alternative two-parameter extensions to the model have been suggested. One common version suggested by Green and colleagues (Green & Myerson, 2004) takes the form:

$$D_\tau = 1/(1 + k\tau)^s. \quad (4)$$

In this and similar (e.g. Rachlin, 2006) equations, s reflects individual differences in the scaling of delay or individual differences in time-perception (Green & Myerson, 2004; Rachlin, 2006; Zauberman, Kim, Malkoc, & Bettman, 2009). When s is less than 1.0, subjective value is more sensitive to changes at shorter delays and less sensitive to changes at longer delays. In other words, individuals have high discount rates over the near term and much more moderate discount rates over the long term. This is equivalent to saying that there is something special about “now” (or the very near term) that makes near-term reward disproportionately valuable (Laibson, 1997). One other well-known model that summarizes these features of behavior is the β - δ model. The discount function in this formulation takes the form

$$D_\tau = \begin{cases} 1 & \text{when } \tau = 0 \\ \beta\delta^\tau & \text{when } \tau > 0 \end{cases} \quad (5)$$

where the parameter β encapsulates the special value placed on immediate rewards relative to

rewards received at any other point in time (Laibson, 1997; McClure, Laibson, Loewenstein, & Cohen, 2004) and the δ parameter is the discount rate in the standard exponential equation (compare with Equation 2). Note that although the additional parameters of quasi-hyperbolic models can, post hoc, be associated with psychological variables, the main motivation for the development of these models was to find a mathematical solution to better fit the data (particularly the subjective value of rewards at long delays). For instance, while it may be true that there is something special about immediate gratification (Magen, Dweck, & Gross, 2008; Prelec & Loewenstein, 1991), it is unlikely that, psychologically, “now” is discontinuous in the manner expressed by the β - δ model (McClure, Ericson, Laibson, Loewenstein, & Cohen, 2007).

Towards a General Model

Although the discounting paradigm has been criticized for not capturing several important features of real-world intertemporal decision-making (Rick & Loewenstein, 2008), hyperbolic discounting models have gained much credibility by (1) showing that groups that exhibit real-world temporally myopic behavior, such as drug addicts (Bickel & Marsch, 2001; Kirby & Petry, 1999), pathological gamblers (Dixon, Marley, & Jacobs, 2003) and ADHD patients (Scheres, Tontsch, Thoeny, & Kaczurkin, 2010), have steeper discount rates than healthy controls; and (2) showing that the task has high stability (Kirby, 2009; see Koffarnus, Jarmolowicz, Mueller, & Bickel, this issue, for a review).

Despite these successes there is currently no consensus on which of the modeling alternatives presented above is superior. Studies have suggested that two parameter models (Equation 4) may fit the discounting behavior slightly better than single-parameter hyperbolic functions (Equation 3), even when controlling for increased model complexity (McKerchar et al., 2009; Takahashi, Oono, & Radford, 2008). However, these kinds of model comparisons fall short of addressing what we consider to be an important limitation of the hyperbolic model: the vast and systematic variability in discount rates observed within individuals across contexts (and between individuals across experiments), which none of the current models is

able to explain (Frederick et al., 2002)¹. To be more explicit: although most discounting behavior can be described very well by hyperbolic or quasi-hyperbolic functions, this has invariably been shown in limited experimental and behavioral contexts. Certainly, discounting (D_t) is well approximated by a hyperbolic function at any given moment, but the nature of this hyperbolic function is highly variable across contexts, so as to lose the majority of its predictive power across contexts.

Systematic changes in individual discount rates have been shown to result from the framing of the choice, the type of goods under consideration and temporary differences in the state of the individual (e.g. whether they are emotionally aroused or hungry; see Section 3, below). Given this known variation in discount rate across contexts, and across “frames” of the same context, the usefulness of attempting to produce any single parametric specification of discounting has been questioned (Frederick et al., 2002; Monterosso & Luo, 2010). Our motivating belief, which underlies the remainder of this article, is that this view is overly pessimistic. Instead, we propose that incorporating known psychological and neural processes into theories of discounting provides a path towards a more general model of time discounting. Moreover, we hope to show that known properties of the brain systems involved in delay discounting already provide an account for many contextual effects on behavior.

Our optimism is not unique or particularly new. Frederick and Loewenstein urged for efforts to understand the processes that underlie discounting instead of aiming to capture something approximating an individuals’ “fixed discount rate” (Frederick et al., 2002; Frederick & Loewenstein, 2008). Rubinstein (2003) suggested that we need to open “the black box of

decision makers instead of modifying functional forms.” We agree, except that we expect that the contents of the black box will be amenable to mathematical description.

Working towards a more general model of discounting, we propose a new formulation that preserves much of the form of the hyperbolic discount function but is grounded in neuroscience. We demonstrate how this model is able to account for a broader body of data than the hyperbolic equation does on its own. Additionally we indicate how such a brain-based mechanistic account can also help to understand how some cognitive models are related to the hyperbolic function.

Neurobiology of Temporal Discounting

Neurobiological frameworks of decision-making divide the required computations into several basic processes or stages (Rangel, Camerer, & Montague, 2008). First is the representational stage in which a representation of the relevant decision variables is constructed. This includes detecting internal states (e.g., hunger level), external states (e.g., reward distribution in environment), and potential actions (e.g., take reward now or wait). Second, in the valuation stage, each action under consideration is assigned a value. The final stage of decision-making consists of comparing the different values and selecting the action that optimizes benefits for the individual. Note that the computations in the three stages of the decision process need not necessarily be performed sequentially but may operate in parallel². Additionally, it is possible that when action selection fails, the representational processes may be engaged again to provide more details. Note also that the current description is agnostic about the phenomenological status of these processes; they may or may not reach conscious awareness. Finally, all decisions are followed by an outcome phase in which the outcome of the selected action is evaluated so as to improve future decisions. In this review we will focus on the phases involved in the decision process,

¹To circumvent the problems created by both the lack of consensus regarding the mathematical form of the discounting function as well as some of the problems for quantitative analysis that arise from statistical properties of the parameters of discounting functions, Myerson and colleagues (Myerson, Green, & Warusawitharana, 2001) have suggested the use of a model-free measure of discounting by calculating the area under the curve (AUC). In this case, a larger AUC corresponds to less discounting, whereas smaller AUCs correspond to greater discounting. However, this solution still results in condensing all motives underlying intertemporal choice into a one measure and is not able to incorporate any systematic changes in discount factors across contexts.

²As we have pointed out earlier, there is evidence that the order of the options under valuation may have an effect on the outcome of the decision processes itself (Weber et al., 2007), suggesting that the valuation processes occur at least partly sequential.

which includes representation, valuation and action selection, given that this has been the target of most, if not all, neuroimaging studies on temporal discounting³.

The neural basis of valuation is complicated by the fact that the brain functions in a parallel manner, with cognition reflecting the combined function of multiple qualitatively different systems. Consonant with this, several theories have proposed that there are multiple types of valuation processes that operate to a certain extent independently (Frank, Cohen, & Sanfey, 2009; McClure et al., 2004; Peters & Büchel, 2010). One well-known example is the tripartite division of (1) a Pavlovian system in which relationships between stimuli and outcomes are learned; (2) a habitual system, in which relationships between stimuli and responses are learned; and (3) a goal-directed system, in which relationships between responses and outcomes are learned (Balleine, Daw, & O'Doherty, 2008). Another related set of models builds on a distinction between brain valuation systems that learn direct associations between stimuli or actions and rewards, and more sophisticated systems in which actions are planned in a goal-direction manner using prospective reasoning (Botvinick, Niv, & Barto, 2009; Daw, Niv, & Dayan, 2005; Frank & Badre, 2012). Importantly, these systems may yield conflicting valuations of the same actions. For example, when a smoker considers lighting a cigarette, a habitual system may lead this action to be highly valued, whereas the goal-directed system may simulta-

neously lead the action to be negatively valued in relation to the goal of quitting.

In the past decade numerous imaging studies have examined temporal discounting using a variety of intertemporal choice tasks (see Peters & Büchel, 2011 for a review). Although the discounting tasks used across experiments have differed on various important aspects (e.g. choice set, choice presentation, type of reward), the findings have converged on a common set of subcortical and cortical regions that are involved in temporal discounting. Commonly, these regions are divided into two networks: a valuation network that is involved in estimating the incentive value of the different options, and a control network that is involved in action selection, considering and maintaining future goals, exerting top-down modulation over the valuation network, and inhibiting prepotent responses (Peters & Büchel, 2011; see Figure 1). More recently, a role has been proposed for the hippocampus and the declarative memory system (Peters & Büchel, 2010). We expect that memory processes will certainly be critical for fully explaining delay discounting, but omit further discussion in this paper because the amount of empirical data is still rather small.

The Valuation Network

Important nodes in the valuation network include the ventromedial prefrontal cortex (VMPFC; including the orbitofrontal cortex, OFC), ventral regions of striatum (VS), amygdala, and the posterior cingulate cortex (PCC; Hariri, Brown, & Williamson, 2006; Kable & Glimcher, 2007; Knutson & Ballard, 2009; Luhmann, Chun, Do-Joon, Lee, & Wang, 2009; McClure et al., 2004, McClure, Ericson et al., 2007; Peters & Büchel, 2009; Pine, Shiner, Seymour, & Dolan, 2010; Sripada, Gonzalez, & Phan, 2011; Weber & Huettel, 2008). These areas are all closely associated with the mesolimbic dopamine system and numerous studies (including human neuroimaging studies) have shown that they play a central role in the representation of incentive value for both primary (e.g. sweet juice) as well as secondary (e.g. money) rewards (e.g. Chib, Rangel, & Shimojo, 2009). The VS and VMPFC are particularly highly studied in this regard. These brain areas are the primary afferent targets of dopaminergic (DA) neurons of the substantia nigra (SN) and the ventral tegmental area

³Note that there are two fundamentally different approaches to investigating intertemporal preferences: modification of choices through operant conditioning (Baum & Rachlin, 1969; Fantino, 1969; Herrnstein, 1970) and recording of choices between two prospective outcomes. Whereas the first originated in animal research, the second became the standard in human (including neuroimaging) studies. Although both types of experiments show decreasing preference for a reinforcer as a function of its delay, there are also significant differences. For instance, in human studies discount rates for questionnaires may be a factor 1000 smaller than those found in operant experiments (see Navarick, 2004, for an excellent overview of operant conditioning paradigms for human studies). These differences may have to do with the direct presence and possible consumption of the reinforcer, as well as the type of reinforcer. However, it is still an open question whether the same mechanisms underlie choice behavior in these types of experiments (but see McClure et al., 2007b), and we therefore consider operant experiments to be another important potential future avenue of neuroscientific research.

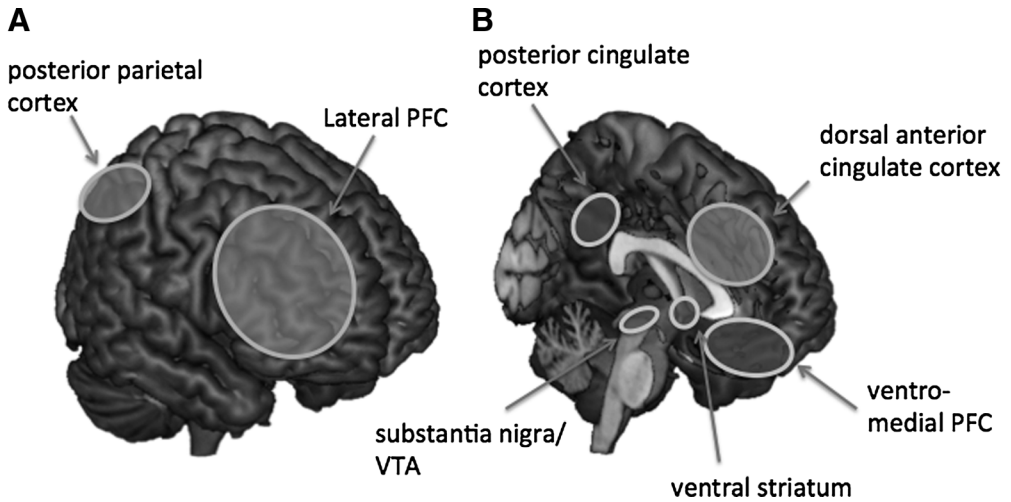


Fig. 1. Brain regions associated with intertemporal choice can be separated into (left) a control and (B) a valuation system.

(VTA), and are believed to be the fundamental brain areas associated with reinforcement learning and reward representation (Haber & Knutson, 2009).

An association between impulsivity and dopamine function is clearly demonstrated by patients with dopamine-related disorders such as addiction, attention-deficit/hyperactivity disorder (ADHD), and dopamine dysregulation syndrome. Although these disorders differ in many respects, they are all thought to be associated with abnormal levels of dopamine in fronto-striatal circuitry. With regard to time discounting, these patient groups have consistently been shown to have steeper discount rates than controls (Dagher & Robbins, 2009; O'Sullivan, Evans, & Lees, 2009; Winstanley, Eagle, & Robbins, 2006). More recently, Pine and colleagues provided more direct evidence for the relationship between DA and discounting by showing that individuals given the DA agonist L-Dopa show higher discount rates compared to placebo (Pine et al., 2010).

The mechanism by which DA influences time discounting and behavior is fairly well established. Dopamine neurons are known to fire in proportion to prediction errors in the associations between stimuli or actions and linked, subsequent rewards (Schultz, Dayan, & Montague, 1997). These errors are used to modify synaptic connections so that neurons in the striatum come to drive action selection in favor of stimuli or actions with greatest

associated reward (Montague, Dayan, & Sejnowski, 1996). This form of learning is clearly evident in rats with lesions in the VS. In a free-operant task, rats with VS lesions learned the association between pressing a certain lever and the delivery of a reward only when reward was concurrent with the action. Learning was impaired when the reward was introduced with a delay, even with a perfect action–outcome contingency (Cardinal, Winstanley, Robbins, & Everitt, 2004). Thus, the magnitude of perceived rewards was normal in these animals, but the lesions produced deficits in the ability to learn associations between actions and subsequent rewards over short time scales.

Several human neuroimaging studies have shown that brain areas associated with the brain's dopamine system, particularly the VS, VMPFC, and PCC, are more active when presented with a choice set containing an immediate option versus a choice set with two delayed options (Albrecht, Volz, Sutter, Laibson, & von Cramon, 2011; Luo, Ainslie, & Giragosian, 2009; McClure, Ericson et al., 2007; McClure et al., 2004). Initially these results were interpreted in terms of the β - δ model, suggesting that the VS, VMPFC and PCC network was primarily involved in the evaluation of the immediate rewards (β system), whereas the value of more delayed rewards is preferentially represented in lateral control regions such as the DLPFC and PPC (δ system; McClure et al., 2004, McClure, Ericson et al., 2007).

However, DA-related brain reward areas do not respond only to immediate rewards. VS, VMPFC, and PCC activity is greater than zero even for choices involving only rewards delayed by 2 weeks or more (McClure et al., 2004). Moreover, activity in these same structures has been shown to correlate with the discounted value of future rewards, even in the absence of immediate rewards (Kable & Glimcher, 2007; Kable & Glimcher, 2010; Peters & Büchel, 2009; Sripada et al., 2011). Nonetheless, the VS, VMPFC, and PCC show a clear present bias in signaling future rewards, which would be expected if these responses are learned from direct associative learning. Moreover, greater activity in the VS, VMPFC, and PCC is associated with more impulsive choices (Hare, Camerer, & Rangel, 2009; McClure et al., 2004).

It is worth pausing briefly at this point to discuss some of the complexities in the neuroscience data, particularly with respect to the VMPFC. Greater activity in the VMPFC is associated with more impulsive decision-making (Hare et al., 2009; McClure et al., 2004). At the same time, it was recently shown that individuals with VMPFC lesions show increased, rather than decreased discounting (Sellitto, Ciaramelli, & di Pellegrino, 2010). Similarly, lesions to (possibly different) parts of the VMPFC in rats both increase (Mobini et al., 2002; Rudebeck, Walton, Smyth, Bannerman, & Rushworth, 2006) and decrease (Kheramin, Body, Mobini, & Ho, 2002; Mar, Walker, Theobald, Eagle, & Robbins, 2011; Winstanley, 2004) discount rates. Based on these and other findings, several researchers have suggested that the VMPFC integrates information that is encoded elsewhere in the brain into one or more value signals (Monterosso & Luo, 2010; Peters & Büchel, 2010). This interpretation is consistent with findings by Roesch, Taylor, and Schoenbaum (2006) who identified two types of neurons in the VMPFC: one class that fired more strongly to immediate rewards compared with delayed rewards and another class that showed the opposite effect, responding more strongly for rewards that were delivered after a long delay. The absence of such integrative value comparisons due to VMPFC damage may affect delay-discounting by requiring the adoption of simple choice strategies that may then lead to more or less impulsive decisions depending on the nature of the task (Mar et al., 2011). A dominant idea in cognitive neuroscience is that

the VMPFC lies at the intersection of the valuation and control networks, integrating information from each system to determine behavior. It may be that the VS, or other structures, are more central components of a valuation network that biases behavior towards immediate rewards.

The Control Network

Important nodes in the control network include the dorsal anterior cingulate cortex (dACC), dorsal and ventral lateral prefrontal cortex (DLPFC/VLPFC), and the posterior parietal cortex (PPC). These brain areas have long been believed to underlie executive processes generally, including controlling attention, working memory, and maintaining behavioral goals. Such processes seem fundamental to conceiving of and guiding behavior to seek rewards available after any significant delay (McClure et al., 2004).

A dominant account for how control is triggered posits a critical role for conflict in response selection (Botvinick, Braver, Barch, Carter, & Cohen, 2001). In the context of intertemporal choice, response conflict occurs when individuals have to choose between two options that have similar discounted subjective values (McClure, Botvinick, Yeung, Green, & Cohen, 2007). The level of response conflict has been associated with a slowing of responses and an increase in activity of the dACC (Carter et al., 1998; Kennerley, Walton, Behrens, Buckley, & Rushworth, 2006). This same pattern of dACC activity and response slowing has been found in temporal discounting tasks (McClure, Botvinick et al., 2007; Pine et al., 2009). Although the function of the conflict signal in the dACC is still under debate, one recent theory suggests that dACC supports the selection and maintenance of context-specific sequences of behavior directed toward long-term goals (Holroyd & Yeung, 2012). As such, in the domain of intertemporal choice the dACC may bias behavior towards different decision strategies that yield less decision conflict, and therefore may result in less or more impulsive behavior, depending on the nature of the task. This interpretation is consistent with recent findings showing that individual differences in patterns of dACC activity are related to the effect of context on discount rates (Ersner-Hershfield, Wimmer, & Knutson, 2008; Peters & Büchel, 2010).

In addition to the dACC, activity in the LPFC and PPC has also been shown to increase on the basis of choice difficulty. In intertemporal choice, difficulty is defined based on indifference: LPFC and PPC activity is greatest when the discounted values of immediate and delayed rewards are equal, and declines as the value of one option grows in relation to the other (Hoffman et al., 2008). Moreover, increased LPFC and PPC activity has been shown to be associated with an increase in the likelihood of selecting larger delayed outcomes over smaller sooner outcomes (Peters and Büchel, 2011). The hypothesis that DLPFC and PPC are involved in response selection is supported by imaging studies showing that activation in DLPFC and PPC relative to areas in the valuation network is associated with selection of delayed rewards (McClure et al., 2004), and that the disruption of left DLPFC through repetitive transcranial magnetic stimulation (rTMS)⁴ leads to increased selection of immediate rewards (Figner et al., 2010).

Several possible mechanisms for how the control network may influence discount rates have been suggested. (1) There could be direct interactions of the LPFC with valuation regions in the VMPFC; (2) the DLPFC could bias attention (possibly via the PPC) to different aspects of the choice; (3) the DLPFC could directly inhibit automatic, prepotent responses that tend to be short-sighted (Figner et al., 2010; Hare et al., 2009; Miller & Cohen, 2001). Future research is needed to determine whether some or all of these processes are involved in temporal discounting, and to develop methods to determine when each is engaged.

Overall, in most situations studied to date, the control network is involved in self-regulation processes necessary for guiding behavior based

on overriding behavioral goals. In the context of intertemporal choice the dominant effect of increased control is to bias behavior in favor of larger later outcomes. Following from this, for our purposes we simply assume that increased recruitment of control processes tends to reduce net discount rates.

A Brain-Inspired Mathematical Model

While knowingly blurring over many details, we can summarize the above discussion by asserting that the brain possesses parallel systems that differ in how they respond to delayed rewards. Parallel system architectures are a common motif in the brain. This is true even at the level of basic sensory processing: There are at least three parallel pathways in vision beginning with outputs from the retina (Hendry & Reid, 2000). For the valuation of future rewards, there seems to exist *at least* a valuation system and a control system. For modeling, our primary assumption is that the valuation system is myopic relative to the control system.

At this point in time, the precise nature of discounting for each of these systems is unclear. Since behavioral output in intertemporal choice is fully summarized by a discount function, we can only capture the function of different systems by their net effect on discounting. We therefore make another simplification in modeling the valuation and control systems, using a summary discount rate to capture these net effects on behavior. For the valuation system, we assign a discount rate δ_1 that is less than the discount rate, δ_2 , for the control system. Again, this assumption is made to stay within what is commonly accepted about the function of these brain systems—that increasing activity in the valuation system tends to increase selection of smaller, sooner outcomes, and increasing activity in the control system tends to increase selection of larger, later outcomes. Put together, we have a discount function given by

$$D_\tau = \omega\delta_1^\tau + (1-\omega)\delta_2^\tau \quad (6)$$

where ω indicates the relative involvement of each system in a given decision (McClure, Ericson et al., 2007). Manipulations that prime the recruitment of one system naturally account for differences in intertemporal preferences (Radu et al., 2011).

⁴TMS produces noninvasive electromagnetic stimulation of the cortex. The magnetic field produced around a coil can pass readily across the scalp and skull and induces an electrical current within a localized area of the cortex. The electrical current is thought to alter the cognitive process associated with the targeted cortical area. Using a single pulse of TMS over a cortical area it is possible to figure out exactly when the cognitive processes are involved in a certain task. For instance, one of the earliest studies showed that TMS of the occipital cortex disrupted the detection of letters only when applied around 80–100 ms after stimulus presentation. Alternatively, one can use repetitive TMS. In this case the targeted area is stimulated for a long period (e. g. 15 minutes in Figner et al., 2010), resulting in the disruption of cognitive function throughout the experiment.

Some technical details regarding Equation 6 are worth noting. First, as in Equation 1, both δ_1 and δ_2 must be at least 0 and no greater than 1 in value. Second, $\delta_1 < \delta_2$, by assumption. Finally, the weighting parameter ω must be between 0 and 1. The inclusion of a ω and a $(1-\omega)$ term is not necessarily intended to indicate an antagonistic relationship between the two systems. Decision-making imposes a normalization of subjective values (choice is for the largest valued option, so only relative values are relevant for modeling preferences). Including ω and $(1-\omega)$ builds this normalization into the model and simultaneously imposes that the discount function (D_t) is 1 for immediate rewards ($\tau = 0$).

This dual system model has a number of attractive features. First, the equation closely approximates quasi-hyperbolic discounting. This implies that Equation 6 can fit behavior

with the same impressive precision that has been repeatedly shown for hyperbolic discounting models. To demonstrate this feature, we reproduced the best-fitting hyperbolic discount function from Pine et al. (2010) in Figure 2A. The dashed line is the best fitting hyperbolic function, and the solid line is the best fitting double exponential model (Equation 6; $\delta_1 = 0.395$, $\delta_2 = 0.965$, $\omega = 0.257$). Data were extracted from Pine et al. (2010) and fitting was done to minimize the sum-squared difference between the hyperbolic and dual system model.

Second, the double exponential model easily fits data in which the valuation and control systems have been experimentally manipulated (Figner et al., 2010; Pine et al., 2010). Figure 2B demonstrates the effect of systemic dopamine agonists on discounting, adapted from Pine et al. (2010). Again, we used an optimization

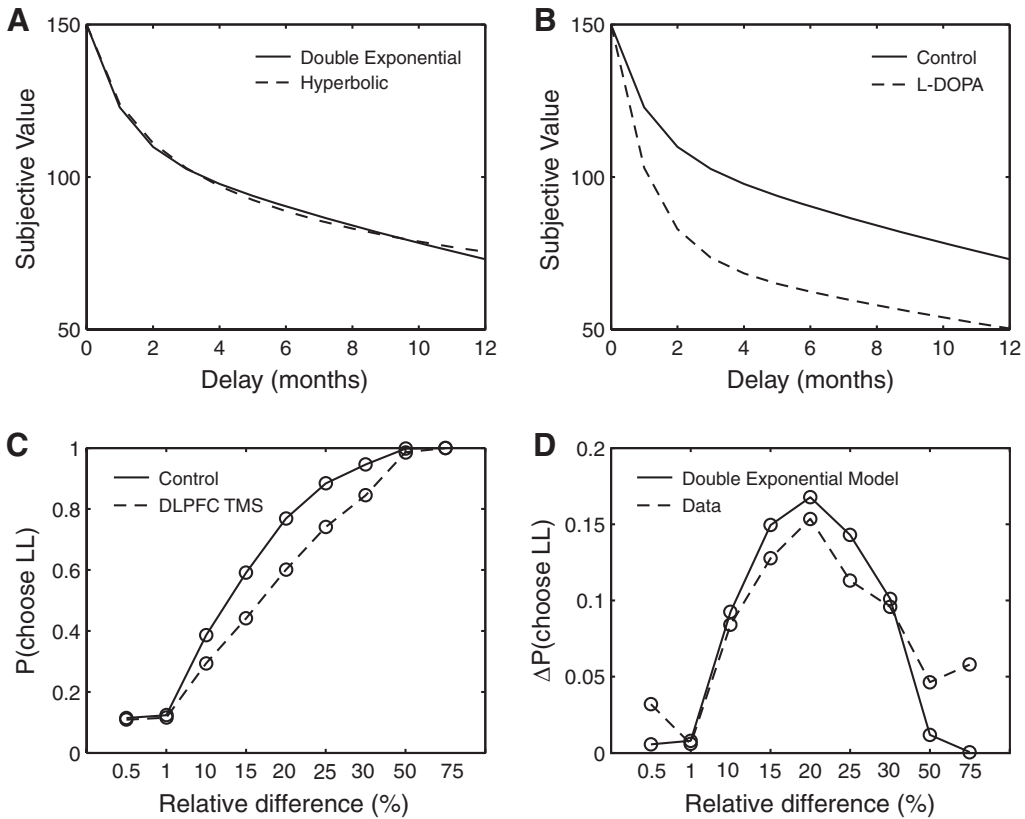


Fig. 2. (A) Dual system models of discounting closely approximate quasihyperbolic models. (B) Moreover, the models can account for the effects of dopamine agonists on discounting (adapted from Pine et al., 2010). (C) Manipulations to the DLPFC also influence discounting, but only for intermediate values of delayed reward (relative difference is percent difference between larger, later rewards relative to smaller, sooner alternatives; adapted from Figner et al., 2010). (D) Our dual system model fits this behavioral effect by changing the relative weight of the valuation and control systems in decision-making.

algorithm to minimize the difference between the dual model discount function and that published in Pine et al. We held δ_1 and δ_2 fixed at the values determined above. Allowing ω to vary, the best fit of the dual system model was achieved by increasing the relative impact of the valuation system via an increase ω (from 0.257 to 0.488).

Manipulations that inhibit the function of the left DLPFC increase the selection of smaller, sooner rewards in a value-dependent manner (Figner et al., 2010). These data are reproduced in Figure 2C, where the x-axis indicates the percent difference in the magnitude of the later reward compared to the smaller, immediate rewards. TMS to the left DLPFC increased selection of smaller, sooner (decrease selection of larger, later or LL choices) only for intermediate values of larger, later rewards. This effect is also easily captured by Equation 6 as an increase in the value of ω (that is, a decrease in the value of the weight, $1-\omega$, on the control system). Increasing ω from 0.257 to 0.425 (and again holding δ_1 and δ_2 fixed) minimizes the difference between the dual system model of discounting and the data from Figner et al., thereby capturing the behavioral impact of inhibiting the control system (Figure 2D).

There is one final comment that should be made before moving on. Figner and colleagues (2010) interpreted their findings to indicate that the left DLPFC is recruited in a reactive manner, based on the presence of conflict in the choice. On first view, this seems to be a natural interpretation of the data. Certainly, conflict should only be high for intermediate values of delayed rewards and likewise manipulating left DLPFC activity only has an effect for these values of reward. However, we are able to produce an excellent fit to their results without assuming any reactivity (Figure 2C, 2D). A second piece of data marshaled by Figner and colleagues to support their claims was the finding that TMS to the left DLPFC did not influence valuation of individually presented outcomes, when participants valued them using a visual-analog scale. We find these data difficult to interpret. First, TMS produces famously subtle behavioral effects so that the likelihood of false negatives is high. Second, the use of visual-analog scales is notoriously finicky and context-sensitive. Given the duration of the effects of TMS, participants rated items in long blocks that were well separated in time. It is reasonable to suspect

that use of the scale differed across blocks making comparison difficult. Finally, TMS to the DLPFC has been shown to influence valuation for other stimuli in which delay is a primary consideration of subjective value (Camus et al., 2009). This argument is not to say that recruitment of the control system does not depend on response conflict in some manner. We simply point out that we are unaware of data that *require* this addition to the model and so we have stuck with a simpler model in which the valuation systems work entirely in parallel (as a sum). We fully expect that future models will have to include interaction terms, but for now we stick with the simpler model because it maintains significant new explanatory power, as discussed next.

Generality of a Neuroscience-Based Model

With a brain-based model in hand, understanding the direction of many known context effects can be reduced to understanding the effects of context on the function of the valuation and control system. We discuss several known context effects below for which the concomitant neural difference can be inferred from extant data. Additionally, we point out that our simplified brain-based model provides a natural bridge between many cognitive models of delay discounting and quantitative measures of discounting behavior.

Context Effects

It is well known that temporary personal state factors can have large influences on discount factors. For example, discounting is elevated when people are hungry, tired, or emotionally aroused so that emotional responses that underlie impulsivity are exaggerated (Giordano et al., 2002; Li, 2008; Van den Bergh, Dewitte, & Warlop, 2008; Wang & Dvorak, 2010; Wilson & Daly, 2004). These effects are fully anticipated by the dual system model. For instance, dopamine is known to regulate food intake by modulating its rewarding effects through the VS (Volkow, Wang, Fowler, & Logan, 2002). It has been shown that hunger results in a decrease in extracellular dopamine levels in the animal's brain (Vig, Gupta, & Basu, 2011). This decrease is believed to trigger a series of reactions that increase the responsiveness of the phasic dopamine system. For a cue that predicts future reward such as the promise of money and

a temporal delay, we would expect that the valuation system is enhanced relative to control (nonhungry) conditions. Directionally, this makes the right prediction with respect to the sign of the effect direction—an increase in net discount rate.

The same argument can be made for other similar effects. For instance, emotional priming increases discounting (Li, 2008; Van den Bergh et al., 2008; Wilson & Daly, 2004). Emotionally evocative stimuli, such as sexually arousing stimuli, are known to increase VS activity in a manner that predicts effects on behavior (Knutson, Wimmer, Kuhnen, & Winkielman, 2008). These results are again easily incorporated by our model as an increase in ω and net discount rates.

Other context effects are known to modulate discount rates by affecting the control system. For instance, discounting is elevated when distracted by a secondary task that competes for attention (Hinson, Jameson, & Whitney, 2003; Shiv & Fedorikhin, 1999). From neuroimaging studies it is known that such secondary tasks put a load on DLPFC and parietal cortex (Szameitat, Schubert, Müller, & Cramon, 2002), suggesting that these manipulations may have the same effect on discounting as the temporary shut-down of the control system by TMS (Figner et al., 2010)⁵.

⁵ In the classic Mischel experiments directing attention to something else also means directing attention completely away from the tempting immediate reward (Mischel & Ebbesen, 1970; Mischel, Ebbesen, & Raskoff Zeiss, 1972). In contrast, in the dual task setting, the participant has to focus on the discounting task, while, at the same time, another task makes a claim on the participant's control resources. Given that the participant can no longer make use of these resources for decision-making it is to be expected that this network has less influence on the decision process. On the other hand, if the other task were very simple and noneffortful we would not expect to see this effect (or a smaller bias).

Similar experiments have shown that after performing a very effortful task that also is thought to engage the control network (e.g. a working memory task) this also biases behavior towards more impatience in a discounting task (Joireman, Balliet, Sprout, Spangenberg, & Schultz, 2008). This effect is often called “ego depletion” given that this is thought to deplete the resources needed for self-regulation. The TMS effect is thought to work in exactly the same way. Finally, following the logic of ego depletion, we would expect that if the participant had performed a very demanding task before doing the Mischel experiment she would not be as successful in directing her attention away from the immediate reward, and thus be more impulsive.

The biggest benefit to a brain-based account may be in understanding contextual effects that have so far evaded process-level description. For example, consider the date/delay effect in which discounting is less when delays are expressed in definite terms (November 1st) as opposed to relative terms (4 weeks; Read, Frederick, Orsel, & Rahman, 2005). Recent neuroimaging data indicate that a similar manipulation increases recruitment of the hippocampus and DLPFC (Peters & Büchel, 2010). On the basis of these brain data, Peters & Büchel speculate on the cognitive (control) processes that may give rise to the effect. We suspect that such neurally inspired accounts may become the norm in research on delay discounting.

Multiple Selves

It is beyond the scope of the current review to discuss cognitive theories of delay discounting with any semblance of completeness. However, we believe it is a worthy challenge for mathematical models of discounting to incorporate conceptual models of the psychological process that underlie intertemporal choice. We briefly discuss some prominent cognitive models—specifically those that fall under the broad heading of “multiple selves”—that seem to align particularly well with our proposed brain-based model.

There is a long tradition of framing intertemporal choice as the outcome of a conflict between multiple selves (Ainslie, 1992). These multiple-selves models can be subdivided into (1) “synchronic” models that posit that the agents' behavior is the product of multiple, possibly conflicting, subagents, and (2) “asynchronic” models that see the agent as the product of a temporal series of agents, which are sometimes engaged in strategic opposition to each other (Monterosso & Luo, 2010). Most synchronic multiple-selves models conceptualize intertemporal choice, or self-control in general, as the struggle between two distinct subagents that value the same outcomes differently, one being myopic and the other future-oriented. For instance, Shefrin and Thaler (1981) suggested a “planner-doer” model in which the myopic “doer” cares only about his or her own immediate gratification, but interacts with the future-oriented “planner” that cares equally about the present and the future.

Similarly, Loewenstein (1996) contrasts non-visceral with visceral motivations and Metcalfe and Mischel (1999) propose a cool “know-system” that interacts with a hot “go-system”. In each of these multiple-selves models, the different selves compete for control of choice, with the common motif of a future-oriented system trying to tone down or suppress a myopic, present-oriented, system.

In contrast to synchronic multiple-self models, diachronic multiple-self models do not suppose that there are multiple selves in any moment in time, but rather posits that the self may not have consistent preferences over time (Ainslie, 1992; Schelling, 1984). Importantly, the current self can, to a certain extent, be aware of its future change in preference. As a result, an individual can at one moment prefer to lose weight, while at the same time know that the future self will succumb to the delicious items on the dessert menu.

The strength of both “synchronic” and “asynchronic” models is that they each predict that individuals will develop strategies to deal with future choices that will involve self-control, such as precommitment. However, few of these multiple-self models have been expressed formally, and it has therefore not been possible to derive testable implications that go beyond the initial intuitions they were based upon (Frederick et al., 2002). The outstanding questions for these frameworks concern how the multiple selves may interact and why one agent may dominate choice behavior in one situation but not in others. We believe that our brain-based model provides some insights into the mechanisms underlying these dynamics.

The VS is believed to control behavior by manipulating motivational drive in a relatively automatic, stimulus-specific, and stereotyped manner. Increased reliance on this system is fundamental to addiction and compulsive behaviors that are subconsciously driven and often beyond deliberative control. Such definite, concrete behaviors supported by the VS contrasts starkly with processes supported by the DLPFC and PPC. The DLPFC is well-recognized to maintain and support high-order, abstract goals. By monitoring performance and guiding attention, the DLPFC is able to direct behavior to satisfy goals in a manner that is largely divorced from the specifics of the required behaviors. This understanding of VS versus DLPFC/PPC activity is strikingly similar to the

conceptual distinctions made between “doers” and “planners” and other multiple-selves accounts.

Finally, in line with our suggested conceptual mapping, some human neuroimaging studies have found that manipulations that increase consideration of the future-self modulate VMPFC in a manner that predicts changes in discount rates (Ersner-Hershfield et al., 2008; Mitchell, Schirmer, Ames, & Gilbert, 2010). The VMPFC has been associated with self-relevant cognition. Self-relevant cognition includes those processes implicated in self-referential thought and self-reflection. For instance, the cortical midline structures, including the medial prefrontal cortex, have been shown to be engaged during tasks that involve relatively unstructured self-reflection, as well as tasks that require making specific judgments about one’s own traits compared to judgments of others or semantic judgments (for a review see Lieberman, 2007). It is hard at this point to link self-relevant processes with reward processing, except for the obvious fact that rewards are naturally self-relevant stimuli, but the link at the level of the brain is clear (van den Bos, McClure, Harris, Fiske, & Cohen, 2007). Of course, lumping the VS, VMPFC and other structures into a singular, ill-specified valuation system is almost certain to be inadequate. Once we better understand the computations supported by these different brain structures, the connection between reward and self-relevant cognitions ought to become clearer.

Importantly, this brain-based model shows how these cognitive models can be linked to hyperbolic discounting curves in a very natural way. Furthermore, as we have shown above, the model can help clarify why an agent may dominate choice behavior in one situation but not in others.

Conclusions

Hyperbolic discounting has been a tremendously influential model in describing intertemporal preferences. In most ways, the model maintains most of its potency. It provides an excellent fit to behavior in (commonly) a single parameter (k) that is directly interpretable as a measure of impulsivity. This aspect of the model seems impossible to displace, and we hope it is never displaced.

However, hyperbolic discounting is severely limited in important ways. Of particular interest for this paper is the fact that the hyperbolic model has no means to account for the various contextual factors that are known to influence a person's intertemporal preferences. Moreover, the model does not connect with increasingly influential cognitive models of discounting.

We have outlined a first, if simplistic, brain-based model of discounting that overcomes these limitations while preserving much of the functional form of the hyperbolic discount equation. Our model is certainly *overly* simplistic. We capture discounting as arising from two parallel systems. However, there are likely to be several other valuation processes involved in making intertemporal choices. Furthermore, the decision-making process itself is likely to include interactions between different systems. Nonetheless, the two-parallel-systems model that we propose already shows the promise afforded by a neuroscience-based approach. The model accounts easily for many known contextual effects based on what is independently known about the function of the underlying brain systems. Furthermore, the nature of these systems indicates links to psychological models of discounting.

References

- Ainslie, G. W. (1975). Specious reward: A behavioral theory of impulsiveness and impulse control. *Psychological Bulletin*, *82*(4), 463–496.
- Ainslie, G. W. (1992). *Picoeconomics*. NY: Cambridge University Press.
- Ainslie, G. W., & Herrnstein, R. J. (1981). Preference reversal and delayed reinforcement. *Animal Learning & Behavior*, *9*(4), 476–482.
- Albrecht, K., Volz, K. G., Sutter, M., Laibson, D. I., & von Cramon, D. Y. (2011). What is for me is not for you: brain correlates of intertemporal choice for self and other. *Social Cognitive and Affective Neuroscience*, *6*(2), 218–225.
- Balleine, B., Daw, N. D., & O'Doherty, J. P. (2008). Multiple forms of value learning and the function of dopamine. In P. W. Glimcher, E. Fehr, A. Rangel, C. F. Camerer & R. Poldrack (Eds.), *Neuroeconomics: Decision Making and the Brain*. New York: New York University.
- Baum, W. M., & Rachlin, H. C. (1969). Choice as time allocation. *Journal of the Experimental Analysis of Behavior*, *12*(6), 861–874.
- Bickel, W. K., & Marsch, L. (2001). Toward a behavioral economic understanding of drug dependence: delay discounting processes. *Addiction*, *96*, 73–86.
- Botvinick, M. M., Braver, T. S., Barch, D. M., Carter, C. S., & Cohen, J. D. (2001). Conflict monitoring and cognitive control. *Psychological review*, *108*(3), 624–652. doi: 10.1037/0033-295X.108.3.624.
- Botvinick, M. M., Niv, Y., & Barto, A. (2009). Hierarchically organized behavior and its neural foundations: A reinforcement learning perspective. *Cognition*, *113*, 262–280.
- Camus, M., Halelamien, N., Plassmann, H., Shimojo, S., O'Doherty, J., Camerer, C. F., & Rangel, A. (2009). Repetitive transcranial magnetic stimulation over the right dorsolateral prefrontal cortex decreases valuations during food choices. *European Journal of Neuroscience*, *30*(10), 1980–1988.
- Cardinal, R., Winstanley, C. A., Robbins, T., & Everitt, B. J. (2004). Limbic corticostriatal systems and delayed reinforcement. *Annals of the New York Academy of Sciences*, *1021*, 33–50.
- Carter, C. S., Braver, T. S., Barch, D. M., Botvinick, M. M., Noll, D., & Cohen, J. D. (1998). Anterior cingulate cortex, error detection, and the online monitoring of performance. *Science*, *280*(5364), 747–749.
- Chib, V., Rangel, A., & Shimojo, S. (2009). Evidence for a common representation of decision values for dissimilar goods in human ventromedialprefrontalcortex. *The Journal of Neuroscience*, *29*(39), 12315–12320.
- Dagher, A., & Robbins, T. (2009). Personality, addiction, dopamine: insights from Parkinson's Disease. *Neuron*, *61*, 502–510.
- Daw, N. D., Niv, Y., & Dayan, P. (2005). Uncertainty-based competition between prefrontal and dorsolateral striatal systems for behavioral control. *Nature Neuroscience*, *8*(12), 1704–1711.
- Dixon, M. R., Marley, J., & Jacobs, E. A. (2003). Delay discounting by pathological gamblers. *Journal of Applied Behavior Analysis*, *36*(4), 449–458.
- Ersner-Hershfield, H., Wimmer, G. E., & Knutson, B. (2008). Saving for the future self: Neural measures of future self-continuity predict temporal discounting. *Social Cognitive and Affective Neuroscience*, *4*(1), 85–92.
- Fantino, E. (1969). Choice and rate of reinforcement. *Journal of the Experimental Analysis of Behavior*, *12*(5), 723–730.
- Figner, B., Knoch, D., Johnson, E. J., Krosch, A. R., Lisanby, S. H., Fehr, E., & Weber, E. U. (2010). Lateral prefrontal cortex and self-control in intertemporal choice. *Nature Neuroscience*, *13*(5), 538–539.
- Frank, M. J., & Badre, D. (2012). Mechanisms of hierarchical reinforcement learning in corticostriatal circuits I: computational analysis. *Cerebral Cortex*, *22*(3), 509–526.
- Frank, M. J., Cohen, M. X., & Sanfey, A. G. (2009). Multiple systems in decision making: a neurocomputational perspective. *Current Directions in Psychological Science*, *18*(2), 73–77.
- Frederick, S., & Loewenstein, G. F. (2008). Conflicting motives in evaluations of sequences. *Journal of Risk and Uncertainty*, *37*(2–3), 221–235.
- Frederick, S., Loewenstein, G. F., & O'Donoghue, T. (2002). Time discounting and time preference: a critical review. *Journal of Economic Literature*, *40*(2), 351–401.
- Giordano, L. A., Bickel, W. K., Loewenstein, G. F., Jacobs, E. A., Marsch, L., & Badger, G. J. (2002). Mild opioid deprivation increases the degree that opioid-dependent outpatients discount delayed heroin and money. *Psychopharmacology*, *163*(2), 174–182.

- Green, L., & Myerson, J. (2004). A discounting framework for choice with delayed and probabilistic rewards. *Psychological Bulletin*, *130*(5), 769–792.
- Green, L., Fisher, E. B., Perlow, S., & Sherman, L. (1981). Preference reversal and self control: Choice as a function of reward amount and delay. *Behaviour Analysis Letters*, *1*, 43–51.
- Haber, S. N., & Knutson, B. (2009). The reward circuit: linking primate anatomy and human imaging. *Neuropsychopharmacology*, *35*(1), 4–26.
- Hare, T. A., Camerer, C. F., & Rangel, A. (2009). Self-control in decision-making involves modulation of the vmPFC valuation system. *Science*, *324*(5927), 646–648.
- Hariri, A., Brown, S., & Williamson, D. (2006). Preference for immediate over delayed rewards is associated with magnitude of ventral striatal activity. *Journal of Neuroscience*, *26*(51), 13217–13217.
- Hendry, S., & Reid, R. (2000). The koniocellular pathway in primate vision. *Annual Review of Neuroscience*, *23*(1), 127–153.
- Herrnstein, R. J. (1970). On the law of effect. *Journal of the Experimental Analysis of Behavior*, *13*(2), 243–266.
- Hinson, J. M., Jameson, T. L., & Whitney, P. (2003). Impulsive decision making and working memory. *Journal of Experimental Psychology: Learning, Memory, and Cognition*, *29*(2), 298–306.
- Hoffman, W. F., Schwartz, D. L., Huckans, M. S., McFarland, B. H., Meiri, G., Stevens, A. A., & Mitchell, S. H. (2008). Cortical activation during delay discounting in abstinent methamphetamine dependent individuals. *Psychopharmacology*, *201*(2), 183–193.
- Holroyd, C., & Yeung, N. (2012). Motivation of extended behaviors by anterior cingulate cortex. *Trends in Cognitive Sciences*, *16*(2), 122–128.
- Joireman, J., Balliet, D., Sprott, D., Spangenberg, E., & Schultz, J. (2008). Consideration of future consequences, ego-depletion, and self-control: Support for distinguishing between CFC-Immediate and CFC-Future sub-scales. *Personality and Individual Differences*, *45*(1), 15–21.
- Kable, J. W., & Glimcher, P. W. (2007). The neural correlates of subjective value during intertemporal choice. *Nature Neuroscience*, *10*(12), 1625–1633. doi: 10.1038/nn2007.
- Kable, J., & Glimcher, P. W. (2010). An “as soon as possible” effect in human intertemporal decision making: behavioral evidence and neural mechanisms. *Journal of Neurophysiology*, *103*, 2513–2531.
- Kennerly, S. W., Walton, M. E., Behrens, T. E. J., Buckley, M. J., & Rushworth, M. F. S. (2006). Optimal decision making and the anterior cingulate cortex. *Nature Neuroscience*, *9*(7), 940–947.
- Kheramin, S., Body, S., Mobini, S., & Ho, M. (2002). Effects of quinolinic acid-induced lesions of the orbital prefrontal cortex on inter-temporal choice: a quantitative analysis. *Psychopharmacology* (165), 9–17.
- Kirby, K. N. (1997). Bidding on the future: Evidence against normative discounting of delayed rewards. *Journal of Experimental Psychology: General*, *126*(1), 54–70.
- Kirby, K. N. (2009). One-year temporal stability of delay-discount rates. *Psychonomic Bulletin & Review*, *16*(3), 457–462.
- Kirby, K. N., & Petry, N. (1999). Heroin addicts have higher discount rates for delayed rewards than non-drug-using controls. *Journal of Experimental Psychology: General*, *128*(1), 78–87.
- Knutson, B., & Ballard, K. (2009). Dissociable neural representations of future reward magnitude and delay during temporal discounting. *NeuroImage*, *45*, 143–150.
- Knutson, B., Wimmer, G. E., Kuhnen, C. M., & Winkielman, P. (2008). Nucleus accumbens activation mediates the influence of reward cues on financial risk taking. *NeuroReport*, *19*(5), 509–513.
- Koffarnus, M. N., Jarmolowicz, D. P., Mueller, E. T., & Bickel, W. K. (2013). Changing delay discounting in light of the competing neurobehavioral decision system theory: A review. *Journal of the Experimental Analysis of Behavior*, *99*, 12–37.
- Laibson, D. I. (1997). Golden eggs and hyperbolic discounting. *The Quarterly Journal of Economics*, *112*(2), 443.
- Li, X. (2008). The effects of appetitive stimuli on out of domain consumption impatience. *Journal of Consumer Research*, *34*(5), 649–656.
- Lieberman, M. D. (2007). Social cognitive neuroscience: a review of core processes. *Annual Review of Psychology*, *58*(1), 259–289.
- Loewenstein, G. F. (1996). Out of control: visceral influences on behavior. *Organizational Behavior and Human Decision Processes*, *65*(3), 272–292.
- Loewenstein, G. F., & Prelec, D. (1993). Preferences for sequences of outcomes. *Psychological Review*, *100*(1), 91–108.
- Luhmann, C. C., Chun, M. V., Do-Joon, Y., Lee, D., & Wang, X.-J. (2009). Behavioral and neural effects of delays during intertemporal choice are independent of probability. *Journal of Neuroscience*, *29*(19), 6055–6057.
- Luo, S., Ainslie, G. W., & Giragosian, L. (2009). Behavioral and neural evidence of incentive bias for immediate rewards relative to preference-matched delayed rewards. *Journal of Neuroscience*, *29*(47), 4820–4827.
- Magen, E., Dweck, C. S., & Gross, J. J. (2008). The hidden-zero effect: representing a single choice as an extended sequence reduces impulsive choice. *Psychological Science*, *19*(7), 648–649.
- Mar, A. C., Walker, A. L. J., Theobald, D. E., Eagle, D. M., & Robbins, T. W. (2011). Dissociable effects of lesions to orbitofrontal cortex subregions on impulsive choice in the rat. *Journal of Neuroscience*, *31*(17), 6398–6404.
- McClure, S. M., Botvinick, M. M., Yeung, N., Green, J. D., & Cohen, J. D. (2007). Conflict monitoring in cognition-emotion competition. In J. J. Gross (Ed.), *Handbook of Emotion Regulation*. New York: The Guilford Press.
- McClure, S. M., Ericson, K. M., Laibson, D. I., Loewenstein, G. F., & Cohen, J. D. (2007). Time discounting for primary rewards. *Journal of Neuroscience*, *27*(21), 5796–5804.
- McClure, S. M., Laibson, D. I., Loewenstein, G. F., & Cohen, J. D. (2004). Separate neural systems value immediate and delayed monetary rewards. *Science*, *306*(5695), 503–507.
- McKerchar, T. L., Green, L., Myerson, J., Pickford, T. S., Hill, J. C., & Stout, S. C. (2009). A comparison of four models of delay discounting in humans. *Behavioural Processes*, *81*(2), 256–259.
- Metcalfe, J., & Mischel, W. (1999). A hot/cool-system analysis of delay of gratification: Dynamics of willpower. *Psychological Review*, *106*(1), 3–19.
- Miller, E., & Cohen, J. D. (2001). An integrative theory of prefrontal cortex function. *Annual Review of Neuroscience*, *24*, 167–202.

- Mischel, W., & Ebbsen, E. B. (1970). Attention in delay of gratification. *Journal of Personality and Social Psychology*, *16*(2), 329–337. doi: 10.1037/h0029815.
- Mischel, W., Ebbsen, E. B., & Raskoff Zeiss, A. (1972). Cognitive and attentional mechanisms in delay of gratification. *Journal of Personality and Social Psychology*, *21*(2), 204.
- Mitchell, J. P., Schirmer, J., Ames, D. L., & Gilbert, D. T. (2010). Medial prefrontal cortex predicts intertemporal choice. *Journal of Cognitive Neuroscience*, *23*(4), 857–866.
- Mobini, S., Body, S., Ho, M., Bradshaw, C., Szabadi, E., Deakin, J., & Anderson, I. (2002). Effects of lesions of the orbitofrontal cortex on sensitivity to delayed and probabilistic reinforcement. *Psychopharmacology*, *160*(3), 290–298.
- Montague, P. R., Dayan, P., & Sejnowski, T. J. (1996). A framework for mesencephalic dopamine systems based on predictive Hebbian learning. *Journal of Neuroscience*, *16*(5), 1936–1947.
- Monterosso, J. R., & Luo, S. (2010). An argument against dual valuation system competition: cognitive capacities supporting future orientation mediate rather than compete with visceral motivations. *Journal of Neuroscience, Psychology, and Economics*, *3*(1), 1–14.
- Myerson, J., Green, L., & Warusawitharana, M. (2001). Area under the curve as a measure of discounting. *Journal of the Experimental Analysis of Behavior*, *76*(2), 235–243.
- Navarick, D. J. (2004). Discounting of delayed reinforcers: measurement by questionnaires versus operant choice procedures. *The Psychological Record*, *54*, 85–94.
- O'Sullivan, S. S., Evans, A. H., & Lees, A. J. (2009). Dopamine dysregulation syndrome: an overview of its epidemiology, mechanisms and management. *CNS Drugs*, *23*(2), 157–170.
- Peters, J., & Büchel, C. (2009). Overlapping and distinct neural systems code for subjective value during intertemporal and risky decision making. *Journal of Neuroscience*, *29*(50), 15727–15734.
- Peters, J., & Büchel, C. (2010). Episodic future thinking reduces reward delay discounting through an enhancement of prefrontal-medioprefrontal interactions. *Neuron*, *66*, 138–148.
- Peters, J., & Büchel, C. (2011). The neural mechanisms of inter-temporal decision-making: understanding variability. *Trends in Cognitive Sciences*, *15*(5), 227–235.
- Pine, A., Seymour, B., Roiser, J., Bossaerts, P., Friston, K., Curran, V., & Dolan, R. J. (2009). Encoding of marginal utility across time in the human brain. *Journal of Neuroscience*, *29*(30), 9575–9581.
- Pine, A., Shiner, T., Seymour, B., & Dolan, R. J. (2010). Dopamine, time, and impulsivity in humans. *Journal of Neuroscience*, *30*(26), 8888–8896.
- Prelec, D., & Loewenstein, G. F. (1991). Decision making over time and under uncertainty: a common approach. *Management Science*, *37*(7), 770–786.
- Rachlin, H. (2006). Notes on discounting. *Journal of the Experimental Analysis of Behavior*, *85*(3), 425–435.
- Radu, P., Yi, R., Bickel, W. K., Gross, J. J., & McClure, S. M. (2011). A mechanism for reducing delay discounting by altering temporal attention. *Journal of the Experimental Analysis of Behavior*, *96*, 363–385.
- Rangel, A., Camerer, C. F., & Montague, P. R. (2008). A framework for studying the neurobiology of value-based decision making. *Nature Reviews Neuroscience*, *9*(7), 545–556.
- Read, D., Frederick, S., Orsel, B., & Rahman, J. (2005). Four score and seven years from now: the date/delay effect in temporal discounting. *Management Science*, *51*(9), 1326–1335.
- Rick, S., & Loewenstein, G. F. (2008). Intangibility in intertemporal choice. *Philosophical Transactions of the Royal Society B: Biological Sciences*, *363*, 3813–3824.
- Roesch, M. R., Taylor, A., & Schoenbaum, G. (2006). Encoding of time-discounted rewards in orbitofrontal cortex is independent of value representation. *Neuron*, *51*, 509–520.
- Rubinstein, A. (2003). “Economics and psychology?” The case of hyperbolic discounting. *International Economic Review*, *44*(4), 1207–1216. doi: 10.1111/1468-2354.t011-00106.
- Rudebeck, P. H., Walton, M. E., Smyth, A. N., Bannerman, D. M., & Rushworth, M. F. S. (2006). Separate neural pathways process different decision costs. *Nature Neuroscience*, *9*(9), 1161–1168.
- Samuelson, P. A. (1937). A note on measurement of utility. *The Review of Economic Studies*, *4*(2), 155–161.
- Schelling, T. (1984). Self-command in practice, in policy, and in a theory of rational choice. *The American Economic Review*, *74*(2), 1–11.
- Scheres, A., Tontsch, C., Thoeny, A. L., & Kaczurkin, A. (2010). Temporal reward discounting in attention-deficit/hyperactivity disorder: the contribution of symptom domains, reward magnitude, and session length. *Biological Psychiatry*, *67*(7), 641–648.
- Schultz, W., Dayan, P., & Montague, P. R. (1997). A neural substrate of prediction and reward. *Science*, *275*(5306), 1593–1599.
- Sellitto, M., Ciaramelli, E., & di Pellegrino, G. (2010). Myopic discounting of future rewards after medial orbitofrontal damage in humans. *Journal of Neuroscience*, *30*(49), 16429–16436.
- Shefrin, H., & Thaler, R. H. (1981). An economic theory of self-control. *The Journal of Political Economy*, *89*(2), 392–406.
- Shiv, B., & Fedorikhin, A. (1999). Heart and mind in conflict: the interplay of affect and cognition in consumer decision making. *Journal of Consumer Research*, *26*(3), 278–292.
- Sripada, C., Gonzalez, R., & Phan, K. L. (2011). The neural correlates of intertemporal decision-making: Contributions of subjective value, stimulus type, and trait impulsivity. *Human Brain Mapping*, *32*, 1637–1648.
- Szameitat, A. J., Schubert, T., Müller, K., & von Cramon, D. Y. (2002). Localization of executive functions in dual-task performance with fMRI. *Journal of Cognitive Neuroscience*, *14*(8), 1184–1199.
- Takahashi, T., Oono, H., & Radford, M. (2008). Psychophysics of time perception and intertemporal choice models. *Physica A: Statistical Mechanics and its Applications*, *387*, 2066–2074.
- Thaler, R. H. (1981). Some empirical evidence on dynamic inconsistency. *Economics Letters*, *8*(3), 201–207.
- Van den Bergh, B., Dewitte, S., & Warlop, L. (2008). Bikinis instigate generalized impatience in intertemporal choice. *Journal of Consumer Research*, *35*(1), 85–97.
- van den Bos, W., McClure, S. M., Harris, L. T., Fiske, S. T., & Cohen, J. D. (2007). Dissociating affective evaluation and social cognitive processes in the ventral medial prefrontal cortex. *Cognitive, Affective, & Behavioral Neuroscience*, *7*(4), 337–346.

- Vig, L., Gupta, A., & Basu, A. (2011). A neurocomputational model for the relation between hunger, dopamine and action rate. *Journal of Intelligent Systems*, 20(4), 373–393.
- Volkow, N. D., Wang, G., Fowler, J. S., & Logan, J. (2002). “Nonhedonic” food motivation in humans involves dopamine in the dorsal striatum and methylphenidate amplifies this effect. *Synapse*, 44(3), 175–180.
- Wang, X. T., & Dvorak, R. D. (2010). Sweet future: fluctuating blood glucose levels affect future discounting. *Psychological Science*, 21(2), 183–188.
- Weber, B. J., & Huettel, S. A. (2008). The neural substrates of probabilistic and intertemporal decision making. *Brain Research*, 1234, 104–115.
- Weber, E. U., Johnson, E. J., Milch, K. F., Chang, H., Brodscholl, J. C., & Goldstein, D. G. (2007). Asymmetric discounting in intertemporal choice: a query-theory account. *Psychological Science*, 18(6), 516–523.
- Wilson, M., & Daly, M. (2004). Do pretty women inspire men to discount the future? *Proceedings of the Royal Society B: Biological Sciences*, 271, S177–S179.
- Winstanley, C. A. (2004). Contrasting roles of basolateral amygdala and orbitofrontal cortex in impulsive choice. *Journal of Neuroscience*, 24(20), 4718–4722.
- Winstanley, C. A., Eagle, D. M., & Robbins, T. (2006). Behavioral models of impulsivity in relation to ADHD: translation between clinical and preclinical studies. *Clinical Psychology Review*, 26, 379–395.
- Zauberman, G., Kim, B. K., Malkoc, S. A., & Bettman, J. R. (2009). Discounting time and time discounting: Subjective time perception and intertemporal preferences. *Journal of Marketing Research*, 46(4), 543–556.

Received: May 15, 2012

Final Acceptance: October 29, 2012